



TECAPRES®

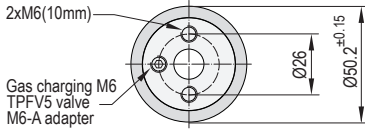
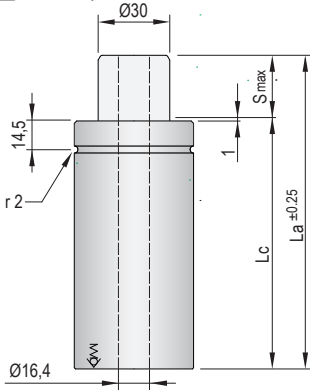
Ø50,2mm
600daN

TPHC 600

VDI SAFETY

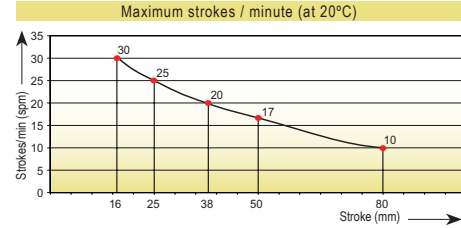


PED
2014/68/EU

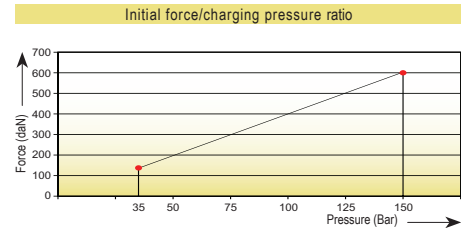
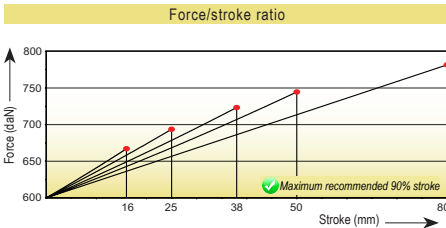


i Pressure medium **Nitrogen (N₂)**

| | |
|-------------------------------|----------------------|
| Max. charging pressure | 150 Bar |
| Min. charging pressure | 35 Bar |
| Rod seal area | 3,93 cm ² |
| Operating temperature | 0°C - 80°C |
| Force increase by temperature | 0,33 %/°C |
| Max. stem speed | 0,5 m/s |
| Maintenance kit | Kit HC600 |

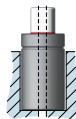


| Code | Smax mm | La mm | Lc mm | | Fa daN | | F daN | | Fc daN | | P Bar | V l | | Kg | |
|------------|---------|-------|-------|-------------------|--------|--|-------|--|--------|--|---------------|-------|------|-------|------|
| TPHC600x16 | 16 | 112 | 96 | 600 ±5% (20°C) | 650 | | 650 | | 655 | | 150 (20°C) | 0,063 | 0,70 | | |
| TPHC600x25 | 25 | 130 | 105 | | | | 670 | | 680 | | | | | 0,073 | 0,91 |
| TPHC600x38 | 38 | 156 | 118 | | | | 695 | | 710 | | | | | 0,088 | 1,12 |
| TPHC600x50 | 50 | 180 | 130 | | | | 715 | | 730 | | | | | 0,101 | 1,28 |
| TPHC600x80 | 80 | 240 | 160 | | | | 745 | | 765 | | | | | 0,135 | 1,62 |

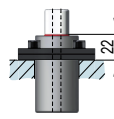


Assembly possibilities

Follow guidelines
Page 287



DROP-IN



FS 50-FSC 50

TPHC

TPA

TPG

TPCT

TPSL

STOP CYLINDER

STOP CYLINDER

TPSR

TPSR5

TPNS

TPHT

